

RDG20



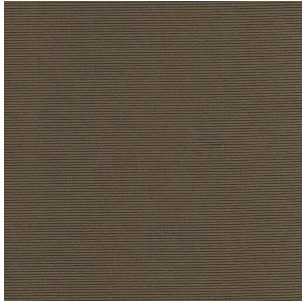
INNOTEX CLASSIC™

Based on the 5222, with a new combination of fabrics.

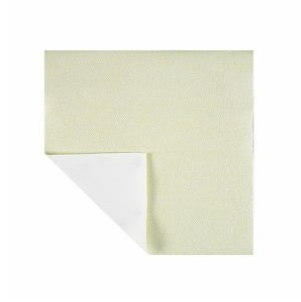
DuPont™
Nomex.
NEVER QUIT.™

DuPont™
Kevlar.

COMPOSITE



Outer Shell:
Pioneer™ Khaki



Moisture Barrier:
Stedair® 3000



Thermal Barrier:
Defender® M NP Brass

STANDARD FEATURES



Basic Configuration
32" style coat / regular waist pant

NFPA style 3M
Scotchlite® 3" triple trim

Snap-in liner attachment



3" BR-1 Collar
Patented BR-1™ collar – 3" – INNO5000™ Series – 4 layers

(US Patent 6 481 018)



Brass Zipper closure on coat



Hook & Dee closure on pants



Flashlight Holder
Right Chest.

8" x 4" x 2" Radio pocket with mic loop
Left Chest.

8" x 10" Semi Bellow Pockets on coat

10" x 10" Semi Bellow Pockets on pants



Regular Knees
Knees reinforced with gray Polymer Coated Aramid.

Includes extra padding in the knee (14 oz Nomex® felt).

Waist Adjustment & Suspenders
Two adjustment straps with thermoplastic buckles

H-style suspenders with neoprene padding

White Nomex wristlet with thumb hole

Inspection Port
On coat and pants.

PARTNERS





Classified by UL to NFPA 1971:2018

INNOTEX®

2397 Harts Ferry Rd., Ohatchee, Alabama
USA 36271

INNOTEX®

275 Gouin, Richmond, Quebec
Canada JOB 2H0

Customer Service

1 888 821 3121 (U.S. and Canada only)
Tel.: 819 826-5971
Fax: 819 826-5195

Email: info@innotexprotection.com
www.innotexprotection.com

® Registered Trademark of INNOTEX INC. or their respective holders.
™ Trademark of INNOTEX INC. or their respective holders.
Printed in Canada / REV. 04-16

Copyright 2018 INNOTEX INC.

All rights reserved. Because of our ongoing commitment to product quality and development we reserve the right to change, cancel, discontinue or alter any specification, design or feature without prior notice and without incurring obligation.

Disclaimer : The portrayed situations are fictional and no attempt should be made to reproduce them.