



RDG

RAPID DELIVERY GEAR

SHIPS IN 15 WORKING DAYS OR LESS
2 Styles. 5 Preconfigured Models. 7 Sizes.





EVERY RDG MODEL OFFERS THE SAME HIGH QUALITY CONSTRUCTION

and standard features as our custom bunker gear and comes with customer-favorite options and preselected materials. 2 Styles. 5 Preconfigured Models. 7 Sizes. We do the math to get your crew turned out quickly and at a price that fits your budget.

A limited number of additional options are also available (\$).
Certified to NFPA 1971.



DESIGNED TO MOVE WITH YOU,
not impede you, INNOTEX® ENERGY™'s
lets you focus your energy on fighting
fires, not your gear. Its streamlined
design is packed with a host of
innovative features that provide
increased durability, unparalleled
comfort and exceptional mobility,
without adding bulk and weight or
compromising thermal protection.

INNOTEX
ENERGY™



Whether you opt for the RDG 40, RDG 50 or RDG 60, you'll be sure to get all the standard innovative and ergonomic features that make our INNOTEX® ENERGY™ one of the most performance-driven turnout gear of the industry.

A VARIABLE HEIGHT COLLAR™

Low-rise front, high-rise back neck/collar configuration provides a contoured fit, resulting in improved comfort and better head movement.
US Patent 8,151,371

B ERGONOMIC FULL MOTION NOSEAM™ SHOULDER

Designed to follow natural arm movements for unparalleled mobility and minimum coat rise. Seams are placed away from high-abrasion areas, eliminating stitching damage due to friction with the SCBA, extending wear life and reducing maintenance costs.

C RETRACTABLE ACTION BACK

Adds length across your back, for increased mobility and comfort when reaching and stretching. Retracts when not in use.

D DURAHEM™ SLEEVE AND LEG HEMS

Ultra-resistant aramid-coated piping is sewn to the cuff, especially designed to receive most of the abrasion, leaving stitching intact.
(Patent pending)

E ANGLED CUFF SLEEVE HEM

Increases protection for the top of the hand without compromising hand mobility.

F OFFSET SEAM DESIGN

Seams are positioned away from high-abrasion areas, increasing wear life and lowering maintenance costs.

G LOW-RISE PANT DESIGN WITH ADJUSTABLE BELT

Comes with a 2-inch Nomex™ belt, with adjustment on both sides and a quick-release buckle. Transfers the weight to the hips instead of the shoulders thus reducing fatigue. Can be used with or without suspenders.

H ENHANCED MOBILITY KNEE™ (EMK™)

Enhances mobility without tugging and ensures that the knee protection stays securely in place.

I NO-GAP™ THROAT FLAP

Provides a NO-GAP™ thermal protection in the throat area. Its padded and easy-to-grab pull-tab secures the coat front for faster donning in a single step.

J NO-BULK™ PANT CLOSURE

Streamlined 3-layer pant closure flap for additional flexibility, comfort and ease of movement when bending.

K REFLECTIVE PIPING SEAMS

Increased visibility at night and in dark confined spaces.

L COMPLETE MOTION CROTCH

Allows greater freedom of movement and prevents twisting.

M WRISTLET EVACUATION SYSTEM

Allows water drainage, thus reducing water entrapment between layers and decreasing risks of steam burns.

N NO-GAP™ ZIP-IN LINER ATTACHMENT

Continuous zip-in liner overlap design provides uninterrupted protection, eliminating gaps between the outer shell and the thermal liner.

O LINER INSPECTION PORT

Secured by a zipper. Provides easy access for moisture barrier and thermal liner inspection.

P VISLON ZIPPERS

A robust high-temp polymer Vislon® zipper is equipped with a grabber for ease of donning and doffing.

Q EASY-TO-GRIP PADDED PULL TAB

Oversized and padded for easy handling with gloves.

Shorter front, longer back coat. Low-rise pant. Streamline, dual-color design packed with a host of innovative, ergonomic features.

STANDARD FEATURES

A VARIABLE HEIGHT COLLAR™

Low-rise front, high-rise back neck/collar configuration. US Patent 8,151,371

B NO-GAP™ THROAT FLAP

Provides a NO-GAP™ thermal protection.

C ERGONOMIC FULL MOTION NOSEAM™ SHOULDER

Designed to follow natural arm movements for optimal mobility. Seams are placed away from high-abrasion areas.

D RETRACTABLE ACTION BACK

Adds length across your back. Increased mobility when reaching and stretching.

E DURAHEM™ SLEEVE AND LEG HEMS

Ultra-resistant aramid-coated piping sewn to the cuff. Protects cuffs from abrasion. (Patent pending)

F ANGLED CUFF SLEEVE HEM

Increases protection for the top of the hand without compromising hand mobility.

G OFFSET SEAM DESIGN

Seams are positioned away from high-abrasion areas, increasing wear life.

H ADJUSTABLE BELT

Comes with a 2-inch Nomex™ belt.

I COMPLETE MOTION CROTCH

Allows greater freedom of movement and prevents twisting.

J ENHANCED MOBILITY KNEE™ (EMK™)

Enhances mobility without tugging. Ensures that the knee protection stays securely in place.

K NO-BULK™ PANT CLOSURE

Streamlined 3-layer pant closure flap.

L REFLECTIVE PIPING SEAMS

Increases visibility.

M EASY-TO-GRIP PADDED PULL TAB

Oversized and padded for easy handling with gloves.

PRECONFIGURED OPTIONS

1 Black Nomex® wristlet with thumb hole.

2 Left chest 8" X 4" X 2" radio pocket with mic loop.

3 Right chest flashlight holder - Clip with Hook & Loop Fastener.

4 Two 8" x 9" semi-bellows pockets on coat.

5 3M™ Scotchlite™ reflective 3" triple segmented trim (Lime/Yellow and Grey) in New York Pattern.

6 Two 10" x 10" bellows pockets on pants.

7 7.5" X 8" inside left pocket with 1" X 3" hook & loop attachment. (Not on picture)

8 Deluxe heavy-duty removable cotton "H" back suspenders with padding.



PBI PERFORMANCE PRODUCTS, INC.

TPP 37 THL 274

Additional options available on request (\$).

OUTER SHELL



PBI Max™ 7.0 Dual color: Gold and Black
Twill weave, with Teflon® F-PPE finish.
Content: PBI®/Kevlar® spun yarn with Kevlar® filament.
Weight: 7.0 oz/yd²



MOISTURE BARRIER



STEDAIR® Gold
Substrate: 50% Kevlar®/30% Nomex®/20% PBI, woven fabric.
Film: Bi-component ePTFE membrane.
Total Weight: 5.2 oz/yd²



THERMAL LINER



GLIDE ICE 2-LAYER
Face Cloth: 60% Nomex® filament, 40% Nomex®/Lenzing FR® spun yarns, twill weave.
Batting: 2 layers of Nomex® spunlace - 2.3 oz./yd² and 1.5 oz./yd²
Total Weight: 7.4 oz/yd²



Shorter front, longer back coat. Low-rise pant. Streamline design packed with a host of innovative, ergonomic features.

STANDARD FEATURES

A VARIABLE HEIGHT COLLAR™

Low-rise front, high-rise back neck/collar configuration. US Patent 8,151,371

B NO-GAP™ THROAT FLAP

Provides a NO-GAP™ thermal protection.

C ERGONOMIC FULL MOTION NOSEAM™ SHOULDER

Designed to follow natural arm movements for optimal mobility. Seams are placed away from high-abrasion areas.

D RETRACTABLE ACTION BACK

Adds length across your back. Increased mobility when reaching and stretching.

E DURAHEM™ SLEEVE AND LEG HEMS

Ultra-resistant aramid-coated piping sewn to the cuff. Protects cuffs from abrasion. (Patent pending)

F ANGLED CUFF SLEEVE HEM

Increases protection for the top of the hand without compromising hand mobility.

G OFFSET SEAM DESIGN

Seams are positioned away from high-abrasion areas, increasing wear life.

H ADJUSTABLE BELT

Comes with a 2-inch Nomex™ belt.

I COMPLETE MOTION CROTCH

Allows greater freedom of movement and prevents twisting.

J ENHANCED MOBILITY KNEE™ (EMK™)

Enhances mobility without tugging. Ensures that the knee protection stays securely in place.

K NO-BULK™ PANT CLOSURE

Streamlined 3-layer pant closure flap.

L REFLECTIVE PIPING SEAMS

Increases visibility.

M EASY-TO-GRIP PADDED PULL TAB

Oversized and padded for easy handling with gloves.

PRECONFIGURED OPTIONS

1 Black Nomex® wristlet with thumb hole.

2 Left chest 8" X 4" X 2" radio pocket with mic loop.

3 Right chest flashlight holder - Clip with Hook & Loop Fastener.

4 Two 8" x 9" semi-bellows pockets on coat.

5 3M™ Scotchlite™ reflective 3" triple segmented trim (Lime/Yellow and Grey) in New York Pattern.

6 Two 10" x 10" bellows pockets on pants.

7 7.5" X 8" inside left pocket with 1" X 3" hook & loop attachment. (Not on picture)

8 Deluxe heavy-duty removable cotton "H" back suspenders with padding.

Additional options available on request (\$).

TPP 54 THL 247

OUTER SHELL



ARMOR AP™ – Black color
400-denier multi-filament twill weave with water repellent finish.
Content: Kevlar®/Nomex®
Weight: 6.5 oz/yd²



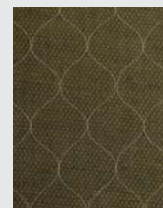
MOISTURE BARRIER



Gore® RT 7100 3D
Substrate: Nomex® non-woven spunlace.
Film: Bi-component ePTFE membrane.
Total Weight: 4.6 oz/yd²

GORE® RT 7100

THERMAL LINER



Prism™ 2-layer
Face Cloth: 68% aramid / 21% FR viscose / 11% polyamide Dobby weave.
Batting: One layer of a E89™ spunlace - 2.3 oz/yd² and 1.5 oz/yd²
Total Weight: 7.4 oz/yd²



Shorter front, longer back coat. Low-rise pant. Streamline design packed with a host of innovative, ergonomic features.

STANDARD FEATURES

A VARIABLE HEIGHT COLLAR™

Low-rise front, high-rise back neck/collar configuration. US Patent 8,151,371

B NO-GAP™ THROAT FLAP

Provides a NO-GAP™ thermal protection.

C ERGONOMIC FULL MOTION NOSEAM™ SHOULDER

Designed to follow natural arm movements for optimal mobility. Seams are placed away from high-abrasion areas.

D RETRACTABLE ACTION BACK

Adds length across your back. Increased mobility when reaching and stretching.

E DURAHEM™ SLEEVE AND LEG HEMS

Ultra-resistant aramid-coated piping sewn to the cuff. Protects cuffs from abrasion. (Patent pending)

F ANGLED CUFF SLEEVE HEM

Increases protection for the top of the hand without compromising hand mobility.

G OFFSET SEAM DESIGN

Seams are positioned away from high-abrasion areas, increasing wear life.

H ADJUSTABLE BELT

Comes with a 2-inch Nomex™ belt.

I COMPLETE MOTION CROTCH

Allows greater freedom of movement and prevents twisting.

J ENHANCED MOBILITY KNEE™ (EMK™)

Enhances mobility without tugging. Ensures that the knee protection stays securely in place.

K NO-BULK™ PANT CLOSURE

Streamlined 3-layer pant closure flap.

L REFLECTIVE PIPING SEAMS

Increases visibility.

M EASY-TO-GRIP PADDED PULL TAB

Oversized and padded for easy handling with gloves.



PRECONFIGURED OPTIONS

1 Black Nomex® wristlet with thumb hole.

2 Left chest 8" X 4" X 2" radio pocket with mic loop.

3 Right chest flashlight holder - Clip with Hook & Loop Fastener.

4 Two 8" x 9" semi-bellows pockets on coat.

5 3M™ Scotchlite™ reflective 3" triple segmented trim (Lime/Yellow and Grey) in New York Pattern.

6 Two 10" x 10" bellows pockets on pants.

7 7.5" X 8" inside left pocket with 1" X 3" hook & loop attachment. (Not on picture)

8 Deluxe heavy-duty removable cotton "H" back suspenders with padding.

Additional options available on request (\$).

TPP 46 THL 231

OUTER SHELL



PIONEER™ - Gold Color

Plain weave with water repellent finish.
Content: Kevlar®/Nomex® blend spun yarn.

Weight: 6.6 oz/yd²

TENCATE
materials that make a difference

MOISTURE BARRIER



GORE® RT 7100 3D

Substrate: Nomex® non-woven spunlace.
Film: Bi-component ePTFE membrane.
Total Weight: 4.6 oz/yd²

GORE®
RT 7100

THERMAL LINER



DEFENDER® M NP - Brass color

Face Cloth: LENZING FR®/Para-aramid/Nylon blend spun yarn, plain weave.

Battling: One layer of needlepunch nonwoven.

Total Weight: 7.0 oz/yd²

TENCATE
materials that make a difference



CLASSIC BUT NOT BASIC. With its relaxed fit, multiple features and quality confection, our CLASSIC sets the bar for value without compromise.

INNOTEX
CLASSIC™

32" length coat with snap-in removable liner system. Regular waist pant. Both come equipped with brass zipper, hook and loop closure and zippered inspection port.

STANDARD FEATURES

- A** Unique patented BR 1™ four-layer collar (3")*. (US Patent 6 481 018)
- B** Inverted "L" shaped storm flap with integrated throat closure. Faster donning. Eliminates gaps around throat.
- C** Preformed sleeves and underarm gusset. Increases mobility. Minimizes arm restriction and coat rise.
- D** Polymer Coated Aramid cuff reinforcements.
- E** Two waist adjustment straps in black webbing with thermoplastic buckles. Hook and D-ring front fly closure with hook & loop closure on front flap. Double fly protection: 5 layers.
- F** Regular knees with Polymer Coated Aramid reinforcement and one extra layer of padding (14oz. Nomex® felt).

PRECONFIGURED OPTIONS

- 1** Black Nomex® wristlets with thumb hole.
- 2** Left chest 8" X 4" X 2" radio pocket with mic loop.
- 3** Right chest flashlight holder - Clip with Hook & Loop Fastener.
- 4** Two 8" x 10" semi-bellows pockets on coat.
- 5** 3M™ Scotchlite™ reflective 3" triple trim (Lime/Yellow and Grey) in NFPA pattern.
- 6** Two 10" x 10" semi-bellows pockets on pants.
- 7** 7.5" X 8" inside left pocket on coat with 1" X 3" hook & loop attachment. *(Not on picture)*
- 8** Deluxe heavy-duty removable cotton "H" back suspenders with padding. *(Not on picture)*

Additional options available on request (\$).

TPP 44 THL 240



OUTER SHELL



PIONEER™ - Khaki Color
Twill weave with water repellent finish.
Content: Kevlar®/Nomex® blend spun yarn.
Weight: 6.6 oz/yd²

TENCATE
materials that make a difference

MOISTURE BARRIER



STEDAIR® 3000
Substrate: Nomex® non-woven spunlace.
Film: Bi-component ePTFE membrane.
Total Weight: 5.2 oz/yd²

Stedfast
ADVANCED BARRIER TECHNOLOGIES

THERMAL LINER



DEFENDER® M NP - Brass color
Face Cloth: LENZING FR®/Para-aramid/Nylon blend spun yarn, plain weave.
Battling: One layer of needlepunch nonwoven.
Total Weight: 7.0 oz/yd²

TENCATE
materials that make a difference

RDG 10

QUALITY GEAR ON A BUDGET. OUR MOST ECONOMICAL OPTION.

INNO TEX
CLASSIC

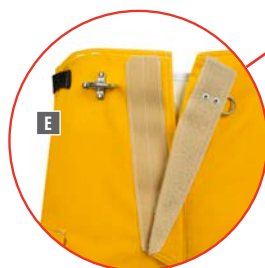
32" length coat with snap-in removable liner system. Regular waist pant. Both come equipped with brass zipper, hook and loop closure and zippered inspection port.

STANDARD FEATURES

- A** Unique patented BR 1™ four-layer collar (3")*. (US Patent 6 481 018)
- B** Inverted "L" shaped storm flap with integrated throat closure. Faster donning. Eliminates gaps around throat.
- C** Preformed sleeves and underarm gusset. Increases mobility. Minimizes arm restriction and coat rise.
- D** Polymer Coated Aramid cuff reinforcements.
- E** Two waist adjustment straps in black webbing with thermoplastic buckles. Hook and D-ring front fly closure with hook & loop closure on front flap. Double fly protection: 5 layers.
- F** Regular knees with Polymer Coated Aramid reinforcement and one extra layer of padding (14oz. Nomex® felt).

PRECONFIGURED OPTIONS

- 1** Natural Nomex® wristlets with thumb hole.
- 2** Left chest 8" X 4" X 2" radio pocket with mic loop.
- 3** Two 8" x 10" semi-bellows pockets on coat.
- 4** Reflective 3" triple trim (Lime/Yellow and Grey) in NFPA pattern.
- 5** Two 10" x 10" semi-bellows pockets on pants.
- 6** 7.5" X 8" inside left pocket on coat with 1" X 3" hook & loop attachment. *(Not on picture)*
- 7** Deluxe heavy-duty removable cotton "H" back suspenders with padding. *(Not on picture)*



Additional options available on request (\$).

TPP 43 THL 231

OUTER SHELL



BRIGADE™ 750 YELLOW
Plain weave with water repellent finish.
Content: 93% Nomex® / 5% Kevlar®
/ 2% Carbon.
Weight: 7.5 oz/yd²

TENCATE
materials that make a difference

MOISTURE BARRIER



STEDAIR® 3000
Substrate: Nomex® non-woven spunlace.
Film: Bi-component ePTFE membrane.
Total Weight: 5.2 oz/yd²

Stedfast
ADVANCED BARREX TECHNOLOGIES

THERMAL LINER



Q-8™
Face Cloth: 50% Meta-aramid, 50% FR modacrylic (spun).
Batting: Reprocessed Aramid, FR rayon, needle-punch, non-woven.
Total Weight: 8.0 oz/yd²

TENCATE
materials that make a difference



OPTIONS & SIZES

ADDITIONAL OPTIONS (\$)

COAT	CLASSIC™		ENERGY™		
	RDG 10	RDG 20	RDG 40	RDG 50	RDG 60
Mic loop / P.A.S.S. loop	●	●	●	●	●
Flashlight Holder - Clip with Hook & Loop Fastener (SL-90)	●	●	●	●	●
Flashlight Holder - Tab with Hook & Loop Fastener	●	●	●	●	●
Flashlight Holder - Riveted clip with Hook & Loop Fastener	●	●	●	●	●
Utility clip on shell strap	●	●	●	●	●
Utility clip on polymer coated aramid loop	●	●	●	●	●
D-Ring on shell strap	●	●	●	●	●
Riveted D-Ring	●	●	●	●	●
Riveted clip	●	●	●	●	●
Fixed glove strap	●	●	●	●	●
Removable utility clip QRS system			●	●	●
Removable utility glove strap QRS system			●	●	●
3M Scotchlite® 5686 - 3" (triple segmented trim) - Red-Orange & Grey			●	●	●
3M Scotchlite® 9586 - 3" (triple trim) - Red-Orange & Grey		●			
3" (triple trim) - Red-Orange & Grey	●				

PANTS	RDG 10	RDG 20	RDG 40	RDG 50	RDG 60
Leg gaitor Neoprene	●	●	●	●	●
Fixed glove strap	●	●	●	●	●
D-Ring on shell strap	●	●	●	●	●
Riveted D-Ring	●	●	●	●	●
Riveted clip	●	●	●	●	●
Utility clip on shell strap	●	●	●	●	●
Kevlar belt	●	●			
Belt loops (4x1.5) unit	●	●			
3M Scotchlite® 5686 - 3" (triple segmented trim) - Red-Orange & Grey			●	●	●
3M Scotchlite® 9586 - 3" (triple trim) - Red-Orange & Grey		●			
3" (triple trim) - Red-Orange & Grey	●				

SIZES

COAT 7 sizes, from S to 4XL. Comes in body 2 with regular sleeve length.							
SIZE	S	M	L	XL	2XL	3XL	4XL
CHEST	36	40	44	48	52	56	60

PANTS 28,30, 32 or 34 inseams.							
SIZE	S	M	L	XL	2XL	3XL	4XL
WAIST	30	34	38	42	46	50	54



INNOTEX® USA

2397 Harts Ferry Road
Ohatchee, AL 36271
USA



INNOTEX® CANADA

275 Gouin Street
Richmond (Quebec)
Canada, J0B 2H0

CUSTOMER SERVICE

1-888-821-3121 (*U.S. & Canada*)
Tel: 819-826-5971
Fax: 819-826-5195

«DUPONT»

Kevlar® | Nomex®

pbi® PERFORMANCE
PRODUCTS, INC.

® Registered Trademark of INNOTEX INC. or their respective holders. Copyright 2019 INNOTEX INC.
All rights reserved. Because of our ongoing commitment to product quality and development we reserve the right to change,
cancel, discontinue or alter any specification, design or feature without prior notice and without incurring obligation.