



INNOTEX ENERGY™

The INNOTEX ENERGY™ is based on efficient design, allowing firefighters to achieve their maximum productivity with minimum waste of effort.

DuPont™
Nomex.
NEVER QUIT.™

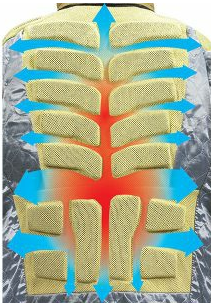
DuPont™
Kevlar.

INNOTEX ENERGY™ COAT

Equipped with our unprecedented Airflow™ technology, the INNOTEX ENERGY™ Coat can be customized to your needs.



FEATURES



Airflow™

Three-dimensional padding system that cushions SCBA while creating channels of flowing air. Made with heavy-duty mesh and precisely shaped, closed-cell foam. Manages perspiration while eliminating sealed-envelope effect when wearing an SCBA.

(patent pending)



Dual Metabolic Zones

Optimized outer shell & thermal barrier properties. Increased THL in high-perspiration zones.

(patent pending)



Utility Pouch

Mesh pouch with integrated safety-release system for accessories. Ideal for storing gloves, hood or other items. May be placed on left or right side. Easily stored in pocket when not in use.

(patent pending)



Utility Glove Strap

Integrated safety-release system. May be placed on left or right side. Easily stored in pocket when not in use.

(patent pending)



Utility Hook

The Utility Hook has an integrated safety-release system and can be placed on the left or right side.

It is easily stored in the pocket when not in use.

(Patent Pending)



Variable Height Collar

All-around protection with 4" back transitioning to 3" front.

(US Patent 8 151 371)



Ergo-Design

Provides freedom of motion. Longer back for increased coat-pant overlap.



Full Motion, NoSeam™ Shoulder

Reduces coat rise to a minimum.



Profiled Pockets

The location of the profiled pockets, as well as their angled openings, allow for easy access, even when wearing an SCBA. Our profiled pockets greatly reduce bulk when bending and crawling, and eliminate possible snagging. They offer a unique zipper closure, an inside mesh pocket for greater breathability, as well as fully fleeced hand warmers.



Designed with Durability Seams

Body-panel and sleeve seams are strategically placed to reduce abrasion and provide greater durability, thus reducing maintenance and repair costs.



NO-BULK™ Front Closure

The NO-BULK™ Front Closure is made of a 3 layer storm flap construction for additional comfort when bending.

A robust Vislon® (high temp polymer) zipper is equipped with a grabber for ease of donning and doffing.



Reflective Piping

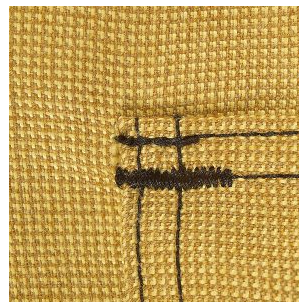
Seams come with retroreflective piping for increased visibility at night and in confined spaces.



NO-GAP™ throat flap

The Integrated NO-GAP™ throat flap uses a compact design that reduces the need for excess material and hook and loop, effectively eliminating extra bulk and stiffness in the neck area.

It's equipped with a padded easy-to-grip pull-tab for faster grabs when wearing gloves.



High Density Bar Tacks

High-Density Bar Tacks are used on all stress points.



Segmented Trim - Optional

Lightweight and flexible, the Scotchlite™ segmented trim is much less rigid and allows greater ease of movement.

It meets NFPA stored energy requirements without requiring any modification or additional layers.



NO-GAP™ Liner Attachment

The NO-GAP™ Liner Attachment uses a continuous Vislon® (high temp polymer) zipper for easier liner installation after care and maintenance.

CLOSURE SYSTEMS



Zipper with Hook and Loop

Eliminates gaps in protection.

Faster donning and doffing.



Compact Chicago Closure

INNOTEX® reinvents the traditional Chicago Closure.

The narrower hook and dee reduce the excess overlap of fabric, allowing for increased comfort and additional space for pockets, clips and other options.



Compact Chicago Closure

The top image is the Compact Chicago Closure reinvented by INNOTEX®. The second one is the traditional Chicago closure.



Hook and D-ring outside with zipper inside

Dual storm flap system. Traditional closure.

INNOTEX ENERGY™ PANTS

Introducing the INNOTEX ENERGY™ Pant. Customizable to your needs. Its features include:



FEATURES



Dual Metabolic Zones

Optimized outer shell & thermal barrier properties. Increased THL in high-perspiration zones.

(patent pending)



"Full Motion" Leg Design

For unrestricted range of motion.



Enhanced Mobility Knee™ (EMK™)

Minimizes climbing effort and knee displacement or rise during motion. Integrated throughout all layers. Optimal padding construction.



DuraHem™ Leg Hem

Rounded hem edge made of polymer coated aramid. Lessens wear and tear. Double seam embedded in outer shell fabric to prevent thread abrasion.

(patent pending)



NO-BULK™ Front Closure

The NO-BULK™ Front Closure is comprised of a robust Vislon® (high temp polymer) zipper which acts as the primary closure.

A 2" fly with 1.5" wide Hook & Loop acts as the secondary closure.



NO-GAP™ Liner Attachment

A NO-GAP™ Liner Attachment utilizing a continuous Vislon® (high temp polymer) zipper provides uninterrupted protection.



Grabber on Fly

The fly is equipped with a padded, easy-to-grip pull-tab for faster grabs when wearing gloves.



Waist Belt

To reduce fatigue, the waist belt carries pant weight on the hips instead of the shoulders. The system can be used with or without suspenders and is compatible with modern suspender systems.



Complete Motion Crotch

The Complete Motion Crotch is a premium design giving full freedom of movement.



Pockets (Large) - Optional

Large 10" x 10" full bellow pockets for increased volume come equipped with padded, easy-to-grip pull-tab pocket flaps.

Inverted semi-bellow pockets are also available on the front side of the thigh, thereby permitting a wide range of uses and easier access when standing or sitting.



Pockets (Small) - Optional

Small 5"x 7" full-bellow pockets with a military-style, forward position allow for increased mobility. They come equipped with padded, easy-to-grip pull-tab pocket flaps.

Inverted semi-bellow pockets are also available on the front side of the thigh, thereby permitting a wide range of uses and easier access when standing or sitting.



Rounded Hook & Loop™

Rounded Hook & Loop uses a rounded corner design to help diffuse the tension of repeated opening and closing thereby reducing wear and tear.

Hook & Loop are secured by box & cross stitching for greater durability.

(U.S. patent D627,950)



Designed with Durability Seams

Leg seams are strategically placed to reduce abrasion and provide greater durability, thus reducing maintenance and repair costs.



Segmented Trim - Optional

Without seams, the Scotchlite™ Segmented Trim reduces long-term repair costs.

As with 3M™ Scotchlite™ Reflective Material – Triple Trim, you can trust it to be flame resistant and durable in extreme conditions.



Reflective Piping

Seams come with retroreflective piping for increased visibility at night and in confined spaces.



High Density Bar Tacks

High-Density Bar Tacks are used on all stress points.

PARTNERS



Classified by UL to NFPA 1971:2018

INNOTEX®

2397 Harts Ferry Rd., Ohatchee, Alabama
USA 36271

INNOTEX®

275 Gouin, Richmond, Quebec
Canada J0B 2H0

Customer Service

1 888 821 3121 (U.S. and Canada only)
Tel.: 819 826-5971
Fax: 819 826-5195

Email: info@innotexprotection.com
www.innotexprotection.com

® Registered Trademark of INNOTEX INC. or their respective holders.

™ Trademark of INNOTEX INC. or their respective holders.

Printed in Canada / REV. 04-16

Copyright 2018 INNOTEX INC.

All rights reserved. Because of our ongoing commitment to product quality and development we reserve the right to change, cancel, discontinue or alter any specification, design or feature without prior notice and without incurring obligation.

Disclaimer : The portrayed situations are fictional and no attempt should be made to reproduce them.