

RDG WITHOUT COMPROMISE.



RAPID DELIVERY GEAR

**INNO
TEX**
BE STRONG.
BE SAFE.

Every RDG model comes with the same **high-quality construction** and standard features as our custom bunker gear.

We've done the math to get your crew turned out quickly with customer-favorite options and preselected field-proven materials — at a price that fits your budget.

—
INNOTEX® RDG:

2 STYLES

5 PRECONFIGURED MODELS

7 SIZES

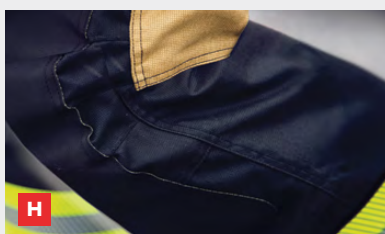
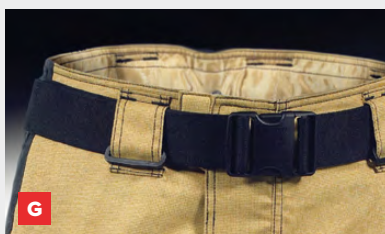
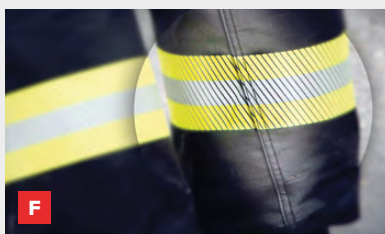
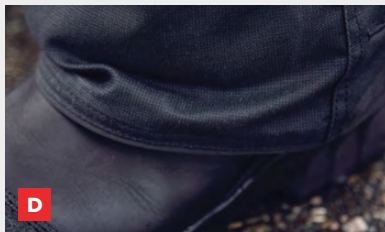
INNOTEX
ENERGY™

Designed to move with you, not impede you, INNOTEX® ENERGY™ lets you focus your energy on fighting fires, not your gear. Its streamlined design is packed with a host of innovative features that provide increased durability, unparalleled comfort and exceptional mobility, without adding bulk or weight or compromising thermal protection.

U.S. patent D627,950

CAN patent pending

NFPA 1971-2018 Certified



INNOTEX ENERGY™

STANDARD FEATURES

Whether you opt for the RDG 60, 50 or 40, you know you're getting all the innovative and ergonomic standard features that make INNOTEX® ENERGY™ among the most performance-driven turnout gear on the market.

A Variable-height collar™

Low-rise front, high-rise back neck/collar configuration provides a contoured fit, resulting in improved comfort and better head movement. (U.S. patent 8,151,371, CAN patent pending)

B Ergonomic full-motion no-seam™

Designed to follow natural arm movements for unparalleled mobility and minimum coat rise. Seams are placed away from high-abrasion areas, eliminating stitching damage due to friction with the SCBA, extending wear life and reducing maintenance costs.

C Retractable action back

Adds width across your back for increased mobility and comfort when reaching and stretching. Retracts when not in use.

D Durahem™ sleeve and leg hems

Ultra-resistant aramid-coated piping is sewn to the cuff, especially designed to absorb most of the abrasion, leaving stitching intact. (Patent pending)

E Angled-cuff sleeve hem

Increases protection for the top of the hand without compromising hand mobility.

F Offset seam design

Seams are positioned away from high-abrasion areas, increasing wear life and lowering maintenance costs.

G Low-rise pant design with adjustable belt

Comes with a 2-inch Nomex™ belt, with adjustment on both sides and a quick-release buckle. Transfers the weight to the hips instead of the shoulders thus reducing fatigue. Can be used with or without suspenders.

H Enhanced-mobility knee™ (EMK™)

Enhances mobility without tugging and ensures that the knee protection stays securely in place.

NOT SHOWN

No-gap™ throat flap

Provides no-gap™ thermal protection in the throat area. Its padded and easy-to-grab pull tab secures the coat front for faster donning in a single step.

No-bulk™ pant closure

Streamlined 3-layer pant closure flap for additional flexibility, comfort and ease of movement when bending.

Seams with reflective piping

Increased visibility at night and in dark confined spaces.

Complete-motion crotch

Allows greater freedom of movement and prevents twisting.

Wristlet evacuation system

Allows water drainage to reduce water entrapment between layers and decreases the risk of steam burns.

No-gap™ zip-in liner attachment

Continuous zip-in liner overlap design provides uninterrupted protection, eliminating gaps between the outer shell and the thermal liner.

Liner inspection port

Secured by a zipper. Provides easy access for moisture barrier and thermal liner inspection.

VISLON® zippers

Robust high-temp polymer VISLON® zipper with a grabber for easy donning and doffing.

Easy-to-grip padded pull tab

Oversized and padded for easy handling with gloves.

RDG60

REMARKABLY FLEXIBLE, LIGHT AND BREATHABLE.

STANDARD FEATURES

- A** Variable-height collar™
- B** Full-motion no-seam™ shoulder
- C** Retractable action back
- D** Durahem™ sleeve and leg hems
- E** Angled-cuff sleeve and hem
- F** Offset seam design
- G** Low-rise pant & adjustable belt (see p.4)
- H** Enhanced-mobility knee™ (EMK™)
- I** No-gap™ throat flap
- J** Complete-motion crotch™
- K** No-bulk™ pant closure (not shown)
- L** Seams with reflective piping
- M** Easy-to-grip padded pull tabs

PRECONFIGURED OPTIONS

- 1** Black Nomex® wristlet with thumb hole
- 2** Left chest: 8" x 4" x 2" radio pocket with mic loop
- 3** Right chest: flashlight holder & clip with hook & loop fastener
- 4** Two 8" x 9" semi-bellows coat pockets
- 5** Micro-perforated trim 3" (lime/yellow & grey) - New York pattern*
- 6** Two 10" x 10" bellows pant pockets
- 7** 7.5" x 8" inside left pocket and 1" x 3" hook & loop attachment (not shown)
- 8** Deluxe heavy-duty removable H-back cotton suspenders with padding (not shown)

*The trim on the image differs from the actual product.



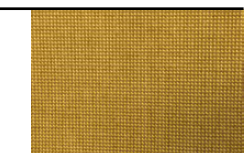
OUTER SHELL

PBI Max™ 7.0 - Dual Color: Gold & Black

Twill weave, Teflon F-PPE finish

Content: PBI®/Kevlar® spun yarn with Kevlar® filament

Weight: 7.0 oz/yd²



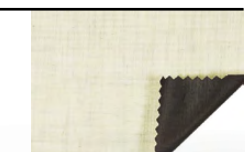
MOISTURE BARRIER

CROSTECH® BLACK 2F

Substrate: Nomex® IIIA woven

Film: Bi-component ePTFE membrane

Total weight: 4.7 oz/yd²



THERMAL LINER

GLIDE ICE™ 2-LAYER

Face cloth: 60% Nomex® filament / 40% Nomex® Lenzing FR® spun yarn twill weave

Batting: 2 layers Nomex® spunlace: 2.3 oz./yd² + 1.5 oz./yd²

Total weight: 7.4 oz/yd²



Additional options available on request (\$)

TPP38.9 THL277.7
NFPA 1971-2018 Certified

RDG50

GREAT THERMAL PROTECTION,
TEAR STRENGTH AND FLEXIBILITY.

RDG40

DURABILITY, MOBILITY AND PROTECTION
AT A PRICE THAT FITS.

STANDARD FEATURES

- A** Variable-height collar™
- B** Full-motion no-seam™
- C** Retractable action back (see p.4)
- D** Durahem™ sleeve and leg hems
- E** Angled-cuff sleeve and hem
- F** Offset seam design
- G** Low-rise pant & adjustable belt (see p.4)
- H** Enhanced-mobility knee™ (EMK™)
- I** No-gap™ throat flap
- J** Complete-motion crotch
- K** No-bulk™ pant closure (not shown)
- L** Seams with reflective piping
- M** Easy-to-grip padded pull tabs

PRECONFIGURED OPTIONS

- 1 Black Nomex® wristlet with thumb hole
- 2 Left chest: 8" x 4" x 2" radio pocket with mic loop
- 3 Right chest: flashlight holder & clip with hook & loop fastener
- 4 Two 8" x 9" semi-bellows coat pockets
- 5 Micro-perforated trim 3" (lime/yellow & grey) - New York pattern*
- 6 Two 10" x 10" bellows pant pockets
- 7 7.5" x 8" inside left pocket and 1" x 3" hook & loop attachment (not shown)
- 8 Deluxe heavy-duty removable H-back cotton suspenders with padding (not shown)

*The trim on the image differs from the actual product.



Additional options available on request (\$)

TTP35.3 THL234.1
NFPA 1971-2018 Certified

OUTER SHELL



ARMOR AP™ - Color: Black

400-denier multi-filament twill weave with water-repellent finish

Content: Kevlar® / Nomex®

Weight: 6.5 oz/yd²



MOISTURE BARRIER



GORE-TEX CROSSTECH® Prime

FR textiles laminated to a proprietary Gore film

Total weight: 4.6 oz/yd²



THERMAL LINER

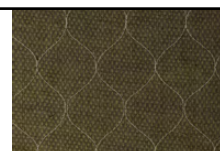


PRISM™ 2-LAYER

Face cloth: 68% aramid / 21% FR viscose / 11% polyamide Dobby weave

Batting: 1 layer of a 2.3 oz/yd² and 1 layer of 1.5 oz/yd² E89™ spunlace

Total weight: 7.4 oz/yd²



STANDARD FEATURES

- A** Variable-height collar™
- B** Full-motion no-seam™
- C** Retractable action back (see p.4)
- D** Durahem™ sleeve and leg hems
- E** Angled-cuff sleeve and hem
- F** Offset seam design
- G** Low-rise pant & adjustable belt (see p.4)
- H** Enhanced-mobility knee™ (EMK™)
- I** No-gap™ throat flap
- J** Complete-motion crotch
- K** No-bulk™ pant closure (not shown)
- L** Seams with reflective piping
- M** Easy-to-grip padded pull tabs

PRECONFIGURED OPTIONS

- 1 Black Nomex® wristlet with thumb hole
- 2 Left chest: 8" x 4" x 2" radio pocket with mic loop
- 3 Right chest: flashlight holder and clip with hook & loop fastener
- 4 Two 8" x 9" semi-bellows coat pockets
- 5 Micro-perforated trim 3" (lime/yellow & grey) - New York pattern*
- 6 Two 10" x 10" bellows pant pockets.
- 7 7.5" x 8" inside left pocket and 1" x 3" hook & loop attachment (not shown)
- 8 Deluxe heavy-duty removable H-back cotton suspenders with padding (not shown)

*The trim on the image differs from the actual product.



Additional options available on request (\$)

TTP41.4 THL229.1
NFPA 1971-2018 Certified

OUTER SHELL

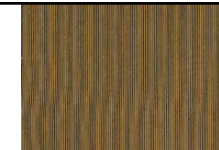


PIONEER™ - Color: Gold

Plain weave, water-repellent finish

Content: Kevlar® / Nomex® blend spun yarn

Weight: 6.6 oz/yd²



MOISTURE BARRIER



GORE-TEX CROSSTECH® Prime

FR textiles laminated to a proprietary Gore film

Total weight: 4.6 oz/yd²



THERMAL LINER



DEFENDER® M NP - Color: Brass

Face cloth: LENZING FR® / Para-aramid / Nylon blend spun yarn, plain weave

Batting: One layer needlepunch, non-woven

Total weight: 7.0 oz/yd²





CLASSIC. NEVER BASIC.

Packed with field-proven INNOTEX® features, cut for comfort and made with exacting attention to detail, INNOTEX® CLASSIC turnout gear sets the bar for value without compromise.

RDG20

PRICE AND QUALITY IN PERFECT BALANCE.

STANDARD FEATURES

- A** Unique 3" BR 1™ four-layer collar.
- B** Inverted L-shaped storm flap with integrated throat closure. Faster donning. Eliminates gaps around throat.
- C** Preformed sleeves and underarm gussets increase mobility, minimize arm restriction and coat rise.
- D** Polymer-coated aramid cuff reinforcements.
- E** Two waist adjustment straps in black webbing with thermoplastic buckles. Hook & loop closure on outer fly flap with hook and D-ring safety clasp. 5-layer fly protection.
- F** Regular knees with polymer-coated aramid reinforcement and one extra layer of padding.

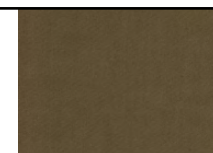
PRECONFIGURED OPTIONS

- 1** Black Nomex® wristlet with thumb hole
- 2** Left chest: 8" x 4" x 2" radio pocket with mic loop
- 3** Right chest: flashlight holder and clip with hook & loop fastener
- 4** Two 8" x 10" semi-bellows coat pockets
- 5** 3M™ Scotchlite™ 3" triple trim (lime/yellow & grey) - NFPA pattern
- 6** Two 10" x 10" semi-bellows pant pockets
- 7** 7.5" x 8" inside left pocket and 1" x 3" hook & loop attachment (not shown)
- 8** Deluxe heavy-duty removable H-back cotton suspenders with padding (not shown)



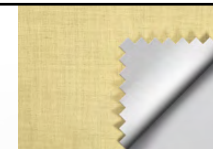
OUTER SHELL

PIONEER™ - Color: Khaki
 Twill weave with water-repellent finish
Content: Kevlar®/ Nomex® blend spun yarn
Weight: 6.6 oz/yd²



MOISTURE BARRIER

STEDAIR® 3000
Substrate: Nomex® non-woven spunlace
Film: Bi-component ePTFE membrane
Total weight: 5.2 oz/yd²



THERMAL LINER

DEFENDER M NP - Color: Brass
Face cloth: Lenzing FR®/ Para-aramid / Nylon blend spun yarn, plain weave
Batting: One layer needlepunch non-woven
Total weight: 7.0 oz/yd²



Additional options available on request (\$).

TPP44 THL240
 NFPA 1971-2018 Certified

STANDARD FEATURES

- A** Unique 3" BR 1™ four-layer collar.
- B** Inverted L-shaped storm flap with integrated throat closure. Faster donning. Eliminates gaps around throat.
- C** Preformed sleeves and underarm gussets increase mobility, minimize arm restriction and coat rise.
- D** Polymer-coated aramid cuff reinforcements.
- E** Two waist adjustment straps in black webbing with thermoplastic buckles. Hook & loop closure on outer fly flap with hook and D-ring safety clasp. 5-layer fly protection.
- F** Regular knees with polymer-coated aramid reinforcement and one extra layer of padding.

PRECONFIGURED OPTIONS

- 1** Natural Nomex® wristlet with thumb hole
- 2** Left chest: 8" x 4" x 2" radio pocket with mic loop
- 3** Two 8" x 10" semi-bellows coat pockets
- 4** Reflective 3" triple trim (lime/yellow & grey) - NFPA pattern
- 5** Two 10" x 10" semi-bellows pant pockets.
- 6** 7.5" x 8" inside left pocket and 1" x 3" hook & loop attachment
- 7** Deluxe heavy-duty removable H-back cotton suspenders with padding (not shown)



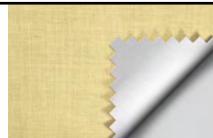
OUTER SHELL

BRIGADE™ 750 - Color: Yellow
Plain weave, water-repellent finish
Content: 93% Nomex® / 5% Kevlar® / 2% Carbon
Weight: 7.5 oz/yd²



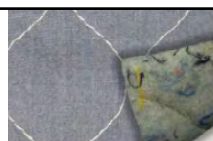
MOISTURE BARRIER

STEDAIR™ 3000
Substrate: Nomex® non-woven spunlace
Film: Bi-component ePTFE membrane
Total weight: 5.2 oz/yd²



THERMAL LINER

Q-8
Face cloth: 50% Meta-aramid / 50% FR modacrylic (spun)
Batting: Reprocessed aramid, FR rayon, needlepunch, non-woven
Total weight: 8.0 oz/yd²



OPTIONS (\$)

COAT

	RDG10	RDG20	RDG40	RDG50	RDG60
Mic loop / P.A.S.S. loop	•	•	•	•	•
Flashlight holder - clip with hook & loop fastener (SL-90)	•	•	•	•	•
Flashlight holder - tab with hook & loop fastener	•	•	•	•	•
Flashlight holder - riveted clip with hook & loop fastener	•	•	•	•	•
Utility clip on shell strap	•	•	•	•	•
Utility clip on polymer-coated aramid loop	•	•	•	•	•
D-ring on shell strap	•	•	•	•	•
Riveted D-ring	•	•	•	•	•
Riveted clip	•	•	•	•	•
Fixed glove strap	•	•	•	•	•
Removable utility clip QRS system			•	•	•
Removable utility glove strap QRS system			•	•	•
3M™ Scotchlite™ 5686 - 3" (triple-segmented trim): red-orange / grey			•	•	•
3M™ Scotchlite™ 9586 - 3" (triple trim): red-orange / grey		•			
3" (triple trim): red-orange / grey	•				

PANTS

	RDG10	RDG20	RDG40	RDG50	RDG60
Neoprene leg gaiter	•	•	•	•	•
Fixed glove strap	•	•	•	•	•
D-ring on shell strap	•	•	•	•	•
Riveted D-ring	•	•	•	•	•
Riveted clip	•	•	•	•	•
Utility clip on shell strap	•	•	•	•	•
Kevlar® belt	•	•			
Belt loops (4X1.5) unit	•	•	•	•	•
3M™ Scotchlite™ 5686 - 3" (triple-segmented trim): red-orange / grey			•	•	•
3M™ Scotchlite™ 9586 - 3" (triple trim): red-orange / grey		•			
3" (triple trim): red-orange / grey	•				

SIZES

COAT

7 sizes. Comes in body 2 with regular sleeve length.

Size	S	M	L	XL	2XL	3XL	4XL
Chest	36	40	44	48	52	56	60

PANTS

Comes in 28 / 30 / 32 / 34 inseams.

Size	S	M	L	XL	2XL	3XL	4XL
Waist	30	34	38	42	46	50	54

Additional options available on request (\$).

TPP43 THL231
NFPA 1971-2018 Certified



INNOTEXPROTECTION.COM

• DUPONT •
Kevlar | Nomex.

pbi
PERFORMANCE
PRODUCTS

 Safety
Components
International

 **TENCATE**
materials that make a difference

StedAIR
MOISTURE BARRIERS

3M | **Scotchlite**
Reflective Material

INNOTEX® USA
2397 Harts Ferry Road
Ohatchee, AL 36271
USA

INNOTEX® CANADA
275 Gouin Street
Richmond QC J0B 2H0
Canada

CUSTOMER SERVICE
1-888-821-3121 (U.S. & Canada)
Tel: 819-826-5971
Fax: 819-826-5195

© 2025 Innotex Inc. Products are distributed in the U.S.A. by INNOTEX CORP. All rights reserved. TM, ® and the Innotex logo are registered trademarks of Innotex. † All other trademarks are the property of their respective owners. Innotex reserves the right at any time to discontinue or change specifications, price, design, features, models or equipment without incurring any obligation. Printed In Canada

CRD000000020EN