

ENERGY™ TO THE RESCUE.



INNOTEX
ENERGY™ / **TECH**
RESCUE

High-Performance Rescue Gear

INNO
TEX
BE STRONG.
BE SAFE.

INTRODUCING THE DUAL-CERTIFIED INNOTEX® ENERGY™ TECH RESCUE GEAR: NFPA 1951¹ & 1977² APPROVED.

Did you know that **96.4%** of fire department calls aren't related to structural fires?*

Patterned after its industry-acclaimed namesake, INNOTEX® ENERGY™ Tech Rescue** offers great ergonomic comfort and ease of movement, while delivering the complete protection first-responders need. In a lightweight package and a fitted-cut, Tech Rescue is a game changer for fighting wildland fires AND for technical rescue situations.



FIELD-TESTED. FIELD-APPROVED.

What I enjoy the most about Energy Tech Rescue gear is the fitted cut and how comfortable it feels. The gear is lightweight and allows ease of movement while also providing protection you can count on. During extrications it has proven to be reliable and I am confident in this brand new rescue gear. I would definitely recommend it!

CARL HAMLIN
Fire captain & technical rescue coordinator
Durham Fire Department, NC

¹NFPA 1951 – Standard on Protective Ensembles for Technical Rescue Incidents
²NFPA 1977 – Standard on Protective Clothing and Equipment for Wildland Fire Fighting and Urban Interface Fire Fighting
*Source: NFPA Fire Experience Survey.
**ENERGY™ Tech Rescue is not NFPA 1971 certified and cannot be worn for structural fire fighting or proximity fire fighting.



PACKED WITH HIGH-PERFORMANCE FEATURES & OPTIONS.

Unmatched comfort, unique patented safety features, field-proven durability: the same DNA as our legendary ENERGY™ turnout gear, now in a lightweight first-responder package.

A Variable-height collar™

Low-rise front, high-rise back = improved head movement. (U.S. patent 8,151,371)

B Traditional throat closure*

Traditional two-piece throat protection flap.

C Retractable action back

Adds width across your back for increased mobility and comfort. Retracts when not in use.

D Full-motion No-Seam™ shoulder

Follows natural arm movements for unparalleled mobility and minimum coat rise. Seams are placed away from high-abrasion areas, eliminating friction damage.

E Seams with reflective piping

Increase visibility at night and in dark, confined spaces.

F Easy-to-grip pull tabs

Oversized and padded for easy handling.

G Complete-motion crotch™

Allows greater freedom of movement and prevents twisting.

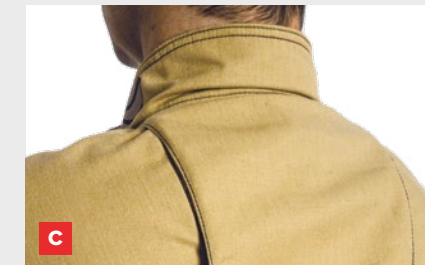
H Low-rise pant with adjustable belt

Comes with a 2-inch Nomex® belt, with adjustment on both sides and a quick-release buckle. Replacing suspenders by a belt transfers the weight from the shoulders to the hips, reducing fatigue.

I Durahem™ leg hems*

Ultra-resistant aramid-coated piping is sewn to the cuff, designed to absorb most of the abrasion, leaving stitching intact. (U.S. patent 11,077,324)

*Available as an option (\$)



RDG-TR20

REMARKABLY FLEXIBLE, LIGHT,
AND OFFERING MANY PATENTED
SECURITY FEATURES.

STANDARD FEATURES

- A** Variable-height collar™
- B** Polar fleece collar lining
- C** Full-motion no-seam™ shoulder
- D** Double-slider thermoplastic zipper
- E** Seams with reflective piping
- F** No lateral seams
- G** Elasticized wrist with adjustment tabs
- H** Complete-motion crotch™
- I** Lateral inset pockets
- J** Belt loops & 2" Nomex® belt
- K** Side thermoplastic zipper opening with adjustment tab

PRE-CONFIGURED OPTIONS

- 1** Removable sleeveless polar fleece vest (100% Nomex® FR) (not shown)
- 2** Storm flap with throat tab closure
- 3** 3M™ Scotchlite™ segmented triple trim & NY trim pattern
- 4** Low-profile pockets with with built-in hand warmer
- 5** Mic loop & radio pocket with flap
- 6** Flashlight holder
- 7** Elbow reinforcement (not shown)
- 8** Back inset pockets with flaps
- 9** 8" x 9" full-bellow pockets
- 10** Durahem™ leg hems
- 11** Knee reinforcement
- 12** Closed-cell foam knee padding (not shown)



OUTER SHELL



SIGMA™

Twill weave with water repellent finish

Content: 45% Meta-aramid / 32% Lenzing® FR / 17% Polyamide / 6% Para-aramid

Weight: 7 oz/yd²

COLORS



SIZES

ENERGY™ Tech Rescue gear is available in sizes **Small** to **7XL**.



RDG-TR10

DURABILITY, MOBILITY AND PROTECTION
AT A PRICE THAT FITS.

STANDARD FEATURES

- A** Variable-height collar™
- B** Polar fleece collar lining
- C** Full-motion no-seam™ shoulder
- D** Double-slider thermoplastic zipper
- E** Seams with reflective piping
- F** No lateral seams
- G** Elasticized wrist with adjustment tabs
- H** Complete-motion crotch
- I** Lateral inset pockets
- J** Belt loops & 2" Nomex® belt
- K** Side thermoplastic zipper opening with adjustment tab

PRE-CONFIGURED OPTIONS

- 1** 3M™ Scotchlite™ triple trim
- 2** Semi-bellow pockets
- 3** Mic loop & radio pocket with flap
- 4** 8" X 9" full-bellow pockets
- 5** NFPA trim pattern (pants)
- 6** Knee reinforcement

OUTER SHELL

Milliken

WESTEX®DH

RipTwill Hydropel™

Content: 48% Lenzing™ Lyocel, 40% Modacrylic, 12% Aramid

Weight: 7.5 oz/yd²

COLORS



SIZES

ENERGY™ Tech Rescue gear is available in sizes **Small** to **7XL**.



STANDARD FEATURES & ADDITIONAL OPTIONS.



INNOTEX
ENERGY™ | **TECH RESCUE**

COAT	TECH RESCUE Standard Features	RDG-TR10	RDG-TR20	OPTIONS
SIGMA™	•	•	•	
Single color	•	•		
Dual color			•	•
Removable sleeveless polar fleece vest (100% Nomex® FR)			•	•
Removable long-sleeve polar fleece Vest (100% Nomex® FR)				•
Exposed zipper	•	•		
Throat tab closure				•
Storm flap with throat tab closure			•	•
3M™ Scotchlite™ plain trim	•			
3M™ Scotchlite™ triple trim		•		•
3M™ Scotchlite™ segmented triple trim			•	•
Basic trim pattern	•	•		
NFPA trim pattern				•
NY Trim pattern			•	•
Hi-Viz trim pattern				•
Low-profile pockets with built-in hand warmer			•	•
Semi-bellow pockets		•		•
Full-bellow pockets				•
Pocket reinforcement*				•
Mic loop & radio pocket with flap		•	•	•
Mic loop & radio pocket with flap & snap				•
Flashlight holder			•	•
Clips and D-ring				•
Elbow reinforcement**			•	•
Elbow padding: 1 or 2-layer felt padding OR 1 or 2-layer closed-cell foam padding				•

*Outershell, Kevlar or Aramid.

**Outershell, Aramid.

Note: Personalization is available. Sewn on shell or sewn on patch.

PANTS	TECH RESCUE Standard Features	RDG-TR10	RDG-TR20	OPTIONS
SIGMA™	•	•	•	
Single color	•	•		
Dual color			•	•
Lateral Inset pockets	•	•	•	
Back inset pockets with flaps			•	•
Semi-bellow pockets				•
Pass-through pockets				•
Full-bellow pockets		•	•	•
Pocket reinforcement*				•
3M™ Scotchlite™ plain trim	•			
3M™ Scotchlite™ triple trim		•		•
3M™ Scotchlite™ segmented triple trim			•	•
NFPA trim pattern	•	•	•	
Hi-Viz trim pattern				•
Belt loops	•	•	•	•
2" Nomex® belt	•	•	•	
External harness loop				•
Durahem™ leg hems			•	•
Inseam guard				•
H-back suspenders				•
H-back suspenders with elastic section				•
X-back suspenders				•
Knee reinforcement**		•	•	•
1-Layer felt knee padding				•
2-Layer felt knee padding				•
1-Layer closed-cell foam knee padding			•	•
2-Layer closed-cell foam knee padding				•
Side zipper opening with adjustment tab	•	•	•	•



INNOTEXPROTECTION.COM



INNOTEX® USA
2397 Harts Ferry Road
Ohatchee, AL 36271
USA

INNOTEX® CANADA
275 Gouin Street
Richmond QC J0B 2H0
Canada

CUSTOMER SERVICE
1-888-821-3121 (U.S. & Canada)
Tel: 819-826-5971
Fax: 819-826-5195

© 2023 Innotex Inc. Products are distributed in the U.S.A. by INNOTEX CORP. All rights reserved. TM, ® and the Innotex logo are registered trademarks of Innotex. † All other trademarks are the property of their respective owners. Innotex reserves the right at any time to discontinue or change specifications, price, design, features, models or equipment without incurring any obligation. Printed In Canada

CTR000000020EN